
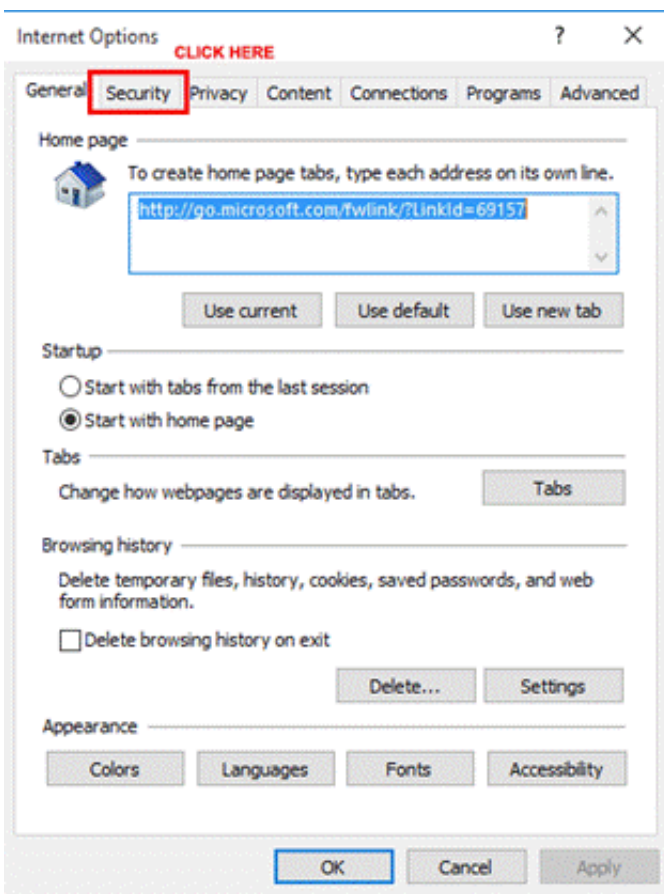
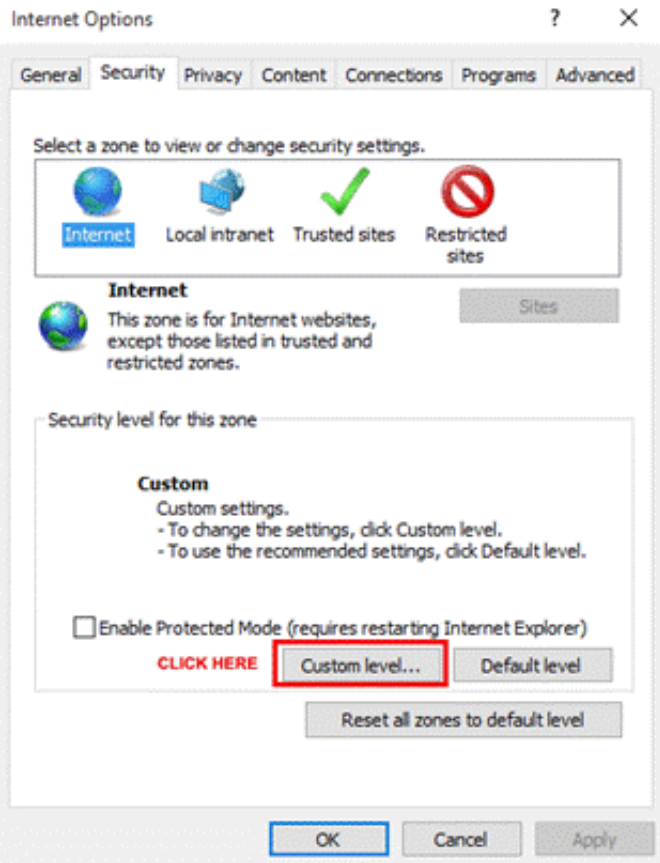


## TO ENABLE THE ACTIVEX SETTINGS FOR ALL DVR, NVR, OR IP CAMERA MODELS

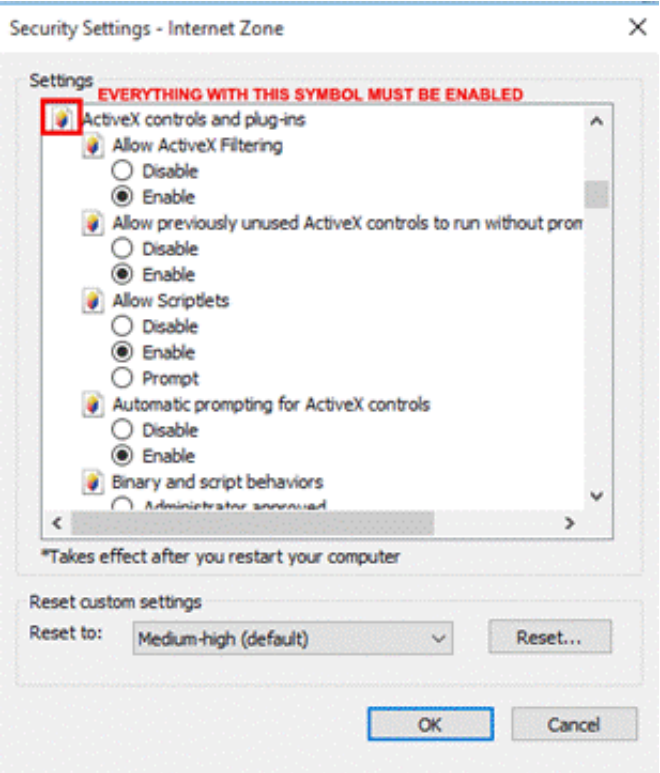
1. Open Internet Explorer Version 10 or above
2. Click the gear at the top right 
3. Select Internet Options
4. Select the security tab

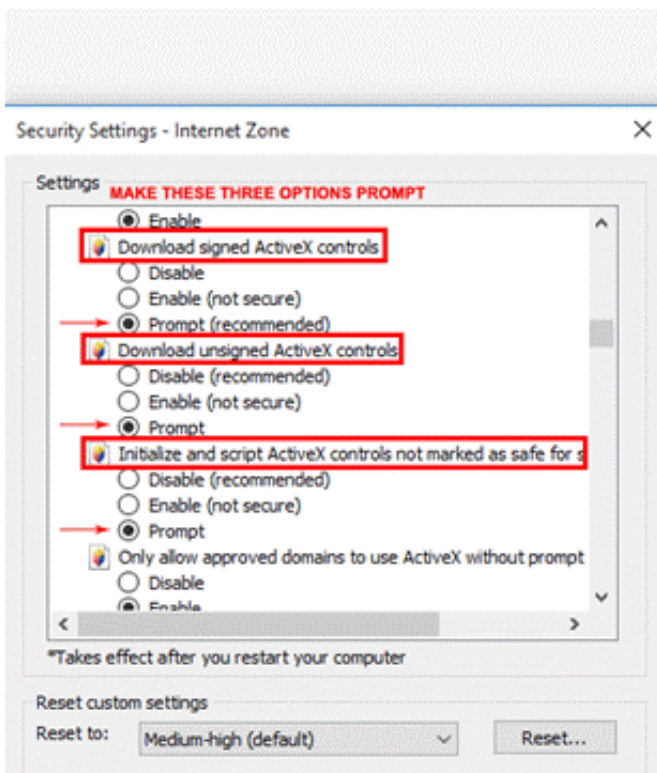


5. Select Custom Level



6. Follow the instructions on how to enable the ActiveX settings in the next two pictures





7. Once you enabled and prompted the appropriate options, press **OK**, then **YES**, and lastly **OK**
8. Restart Internet Explorer and continue to your DVR/NVR/IP CAMERA's IP address and Enjoy!

**NOTE: MOST DVR/NVR/IP CAMERA'S REQUIRE YOU TO DOWNLOAD AN ACTIVEX PLUG-IN. BEFORE INSTALLING THE PLUG-IN'S MAKE SURE YOU COMPLETE THE ABOVE STEPS FIRST!!! TO INSTALL THE PLUG-INS IF NEEDED, THE LOGIN PAGE OF THE DEVICE WILL PROMPT OR PRESENT YOU WITH A LINK TO DOWNLOAD THE PLUG-IN'S INSTALLER. ONCE THE PLUG-IN IS INSTALLED, RESTART YOUR INTERNET EXPLORER BROWSER. THE ABOVE STEPS WILL NOT HAVE TO BE REPEATED.**